

# SERVICE MANUAL

(New Glass Kettle Set, Model KOR-2060SP)

As of December, 2016

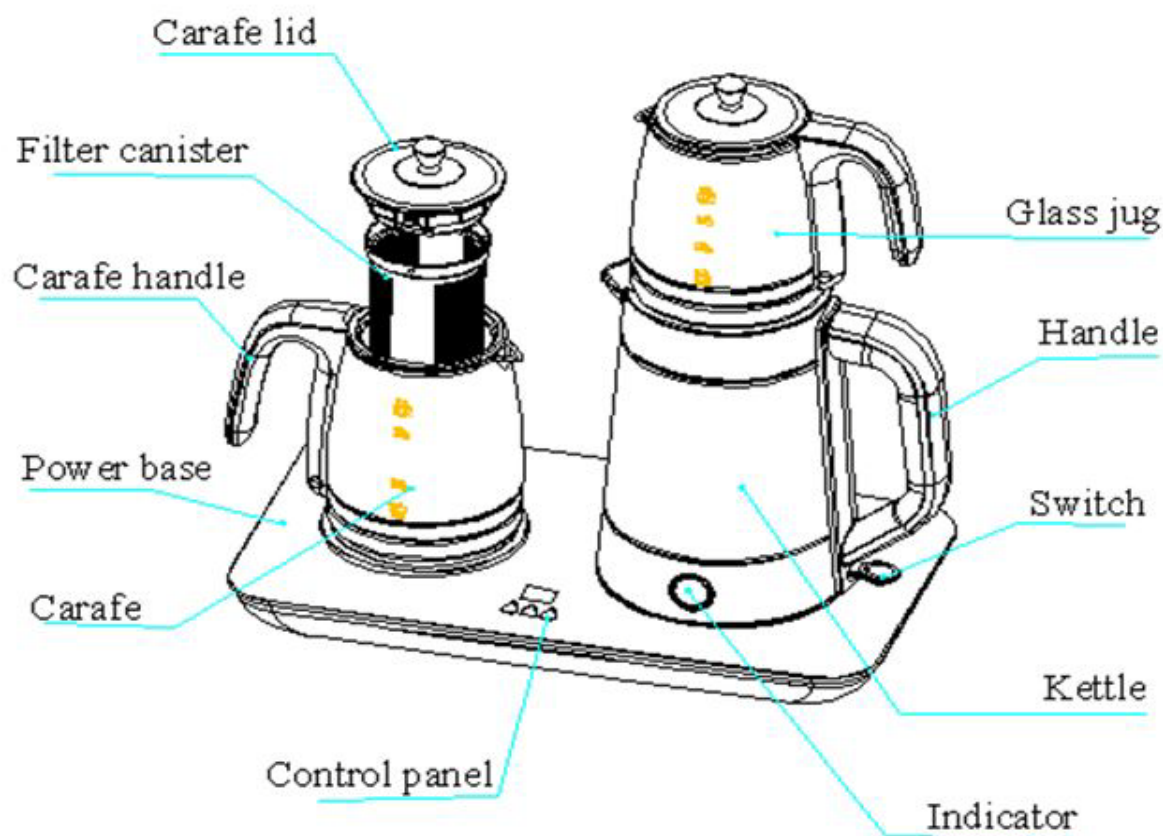


**Magic**

- ▶ Product Specification Sheet ----- 2
- ▶ Part Identification ----- 3
- ▶ Exploded View ----- 4
- ▶ Part List ----- 5
- ▶ Technical Information of Operation----- 6

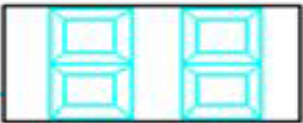
# Product Specification Sheet

<b>Product name</b>	<b>New glass Kettle set</b>
<b>Model</b>	<b>KOR-2060SP</b>
<b>Voltage</b>	<b>AC220-240V, 50/60Hz</b>
<b>Watt</b>	<b>1850-2300W</b>
<b>Charging Power</b>	<b>DC12V 16A</b>
<b>Size</b>	<b>466mm (W) x 280mm (D) x 273mm (H)</b>
<b>Liter</b>	<b>1.7L: Kettle / 1.0L: Upper Right Tea Pot / 1.2 Left Tea Pot</b>
<b>Main Body, Weight, Cord Length</b>	<b>4.7KG, 0.65M</b>
<b>Component</b>	<b>5-LAYER</b>



• **Control panel**

Temperature display

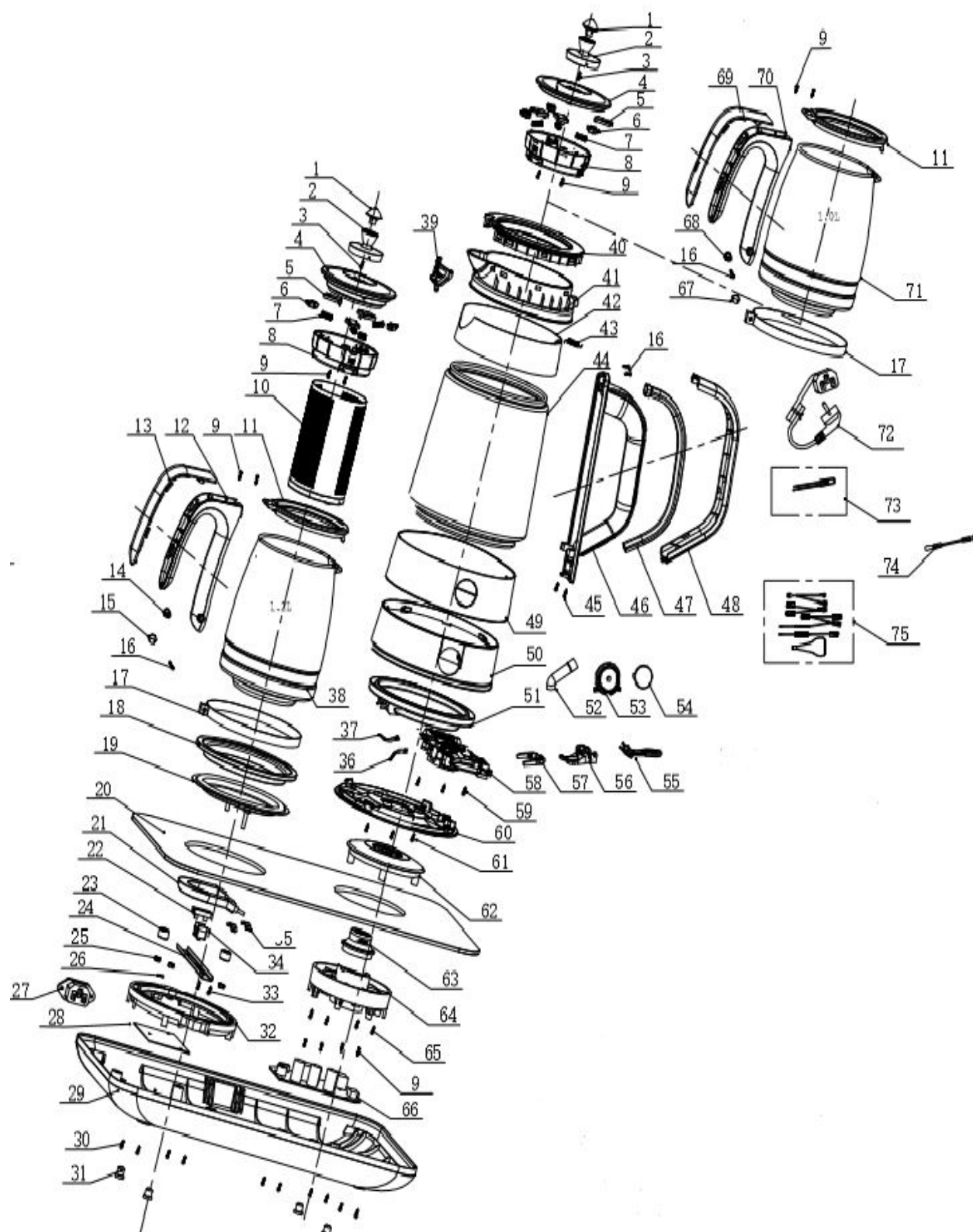


On/Off button

Temperature " - " Button

Temperature " + " Button

# Exploded View





# Part List

DRWING NO	PART NAME	QTY	DRWING NO	PART NAME	QTY
1	LID COVER	2	39	FILTER	1
2	LID HANDLE	2	40	LID UP COVER	1
3	A SCREW	2	41	LID FIX RING	1
4	LID UP COVER	2	42	SPOUT COVER	1
5	PRESS BLOCK	6	43	TENSION SPRING	1
6	LID LOCK	6	44	GLASS BODY	1
7	COMPRESSING SPRING	6	45	A SCREW	2
8	LID DOWN COVER	2	46	HANDLE	1
9	A SCREW	12	47	STEAM TUBE	1
10	FILTER CYLINDER	1	48	HANDLE COVER	1
11	GLASS FIX RING	2	49	BODY BOTTOM DECORING	1
12	CARAFE HANDLE	1	50	BODY BOTTOM	1
13	CARAFE HANDLE COVER	1	51	HEAT PLATE ASM	1
14	SCREW CYLINDER	1	52	STEAM TUBE CONNECTOR	1
15	SCREW COVER	1	53	COVER	1
16	A SCREW	4	54	LAMP COVER DECO	1
17	JUG RING	2	55	SWITCH	1
18	PLATE SEAL RING	1	56	STEAM BOX	1
19	WARMING PLATE	1	57	POCK ROB	1
20	GLASS PANEL	1	58	THERMOSTAT	1
21	HEAT ELEMENT	1	59	A SCREW	3
22	NTC SEAL RING	1	60	BODY BOTTON COVER	1
23	INSULATE MAT	2	61	A SCREW	3
24	HEAT ELEMENT CLAMP	1	62	TEA PLANT BASE	1
25	HEXAGONAL NUT	3	63	CONNECTOR	1
26	SPRING WASHER	1	64	FIX PLANT 1	1
27	POWER INLET	1	65	A SCREW	4
28	MICA PLAT	1	66	CONTROL PCB ASM	1
29	TEA PLANT BASE COVER	1	67	SCREW CYLINDER	1
30	A SCREW	10	68	SCREW COVER	1
31	RUBBER FOOT	4	69	HANDLE COVER	1
32	FIX PLANT2	1	70	HANDLE	1
33	A SCREW	2	71	CARAFE (1.0L)	1
34	NTC PLANT	1	72	POWER CODE ASM	1
35	FUSE HOLDER	2	73	LAMP WIRE ASM	1
36	CONNECT PLATE (RIGHT)	1	74	EARTH WIRE ASM	1
37	CONNECT PLATE (LEFT)	1	75	WIRE ASM	1
38	CARAFE (1.2L)	1			

# Technical Information of Operation

Alternatively, the kettle may be filled through the spout. The water level must be within the Min and the Max level. Too little water will cause the kettle switching off before the water has boiled.

**NOTE:** Do not fill the water over the maximum level, as water may spill out of the spout when boiling. Ensure that the lid is firmly in place before plugging the power outlet.

2. Position the kettle on the power base. Connect the plug into power outlet.
3. Press down the switch, the indicator will light up. Then start to boil the water, the kettle will switch off automatically once the water has boiled. The kettle will not re-boil until the switch is pressed again. The kettle may be stored on the power base when not in use.

**NOTE :** Ensure that switch is free of obstructions and the lid is firmly closed, The kettle will not turn off if the switch is constrained or if the lid is opening.

4. If you want to make tea, open the carafe lid, take out filter canister from carafe, then put tea or a bag of tea into the filter canister and place it back properly in the carafe, make sure the hole in the filter canister aligns with the tuber on the handle of carafe.

5. Lift water kettle from power base and then pour boiled water carefully into carafe (the level of water should not low than 0.6L), eventually close carafe lid.

**NOTE:** ①Operate carefully when pouring the water from your kettle, as boiling water will scald, and press the carafe lid when pouring to prevent the filter falling out. Don't open the lid while the water in the kettle is hot.

②You can also pour boiled water into glass jug for keeping warm.

③Normally, the glass jug handle is just above the kettle handle, you can turn the glass jug handle clockwise and anticlockwise, but can't exceed the arrow mark on the kettle.



6. Place the carafe with hot water on the keeping warm plate, press the “ON/OFF” button once, the appliance enters the keeping warm state, you can adjust the temperature of keeping warm by pressing temperature “+” or “-” button (the keeping warm temperature range is between 50°C~80°C), you can stop keeping warm at any time by pressing “ON/OFF” button.

**NOTE:** The defaulted keeping warm temperature is 80 °C, the keeping warm plate will cut off the power automatically after 2 hours when temperature is 50°C~65°C; the keeping warm plate will cut off the power automatically after 1 hour when temperature is 70°C~80°C .

**NOTE:** Ensure power supply is turned off and power cord is taken down when water kettle and carafe are not in use. If there has water on the coupler, unplug first and the connector must be removed. Make sure the connector and inlet must be dried before the appliance is used again.

## Boil-dry protect

Should you accidentally let the kettle operate without water, the boil-dry protection will automatically switch off the power. If this occurs, allow the kettle to cool before filling with cold water before re-boiling.

## Cleaning and Maintenance

Always disconnect the appliance from the power outlet before cleaning. Never immerse the kettle, power cord or power base in water, or allow moisture to contact with these parts. Wipe the appearance of water kettle and base with a mild and damp cloth or cleaner, never use a corrosive cleaner. Immerse the carafe and the inner of it in soapy water and then rinse it in tap water. Then wipe it dry.

**CAUTION:** Do not use chemical, steel, wooden or abrasive cleaners to clean the outside of the kettle.



## Removal of mineral deposits

Your kettle should be periodically descaled as the mineral deposits in tap water may form scale on the bottom of kettle so as to cause the operation less efficiency. You can use the commercially available descaler and follow the instructions on the package of descaler. Alternatively, you may follow below instructions using the white vinegar.

1. Fill the kettle with 3 cups of white vinegar, then adding water to the amount so as to cover the bottom of kettle completely. Leave the solution in the kettle overnight.
2. Then discard the mixture in the kettle, then filling the kettle with clean water, boiling and then discard the water. Repeat several times until the odor of vinegar has been flushes away. Any stains remaining inside the spout can be removed by rubbing with a damp cloth.

## ENVIRONMENT FRIENDLY DISPOSAL



You can help protect the environment!  
Please remember to respect the local regulations: hand in the non-working electrical equipments to an appropriate waste disposal center.

